



testo 881

## Thermal Imager

### Testo 881 Thermal Imager for Preventive and Predictive Maintenance

The testo 881 thermal imaging camera can quickly and accurately discover thermal anomalies and weak spots in industrial plants and manufacturing facilities. Used regularly as a predictive maintenance and monitoring tool, it can save you thousands of dollars by safely pinpointing potential problems and avoiding costly downtimes and repairs.

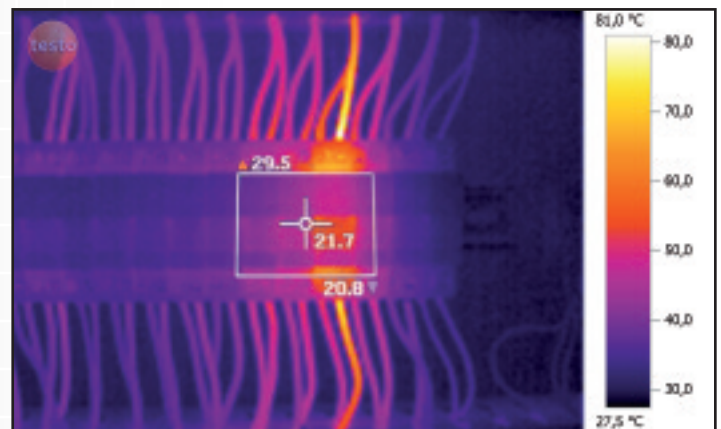
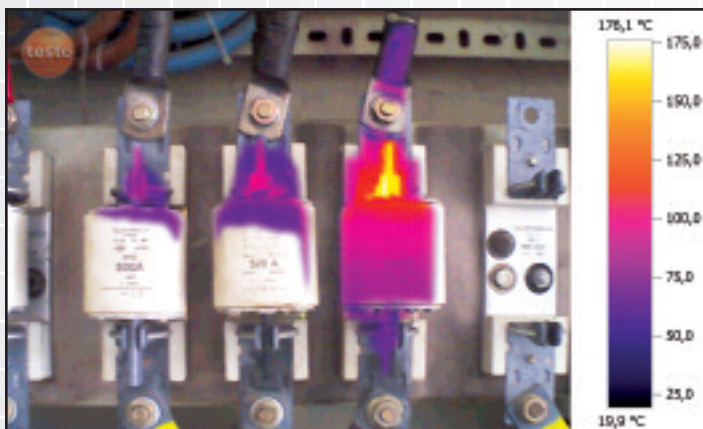


### Saving Time, Energy and Money.

#### FEATURES

- 32° x 23° field of view scans a large area quickly
- High thermal sensitivity (0.05° C)
- Intuitive menu with 5 way joystick control
- Fast refresh rate
- Integrated camera captures thermal and visual images simultaneously
- **TwinPix software technology blends thermal and visual image together**

Unique TwinPix software blends both the thermal and visual image together into one image





## Thermal Imager

### Technical Data

Detector type	FPA 160 x 120 pixels, a.Si
Thermal sensitivity (NETD)	< 50 mK at +30 °C(86°F)
Field of view/min. focus distance	32° x 23° / 4" (standard lens), 9° x 7° / 20" (telephoto lens)
Geometric resolution (IFOV)	3.3 mrad (standard lens), 1.0 mrad (telephoto lens)
Image refresh rate	33 Hz
Focus	manual 881-1 / manual and motor focus 881-3
Spectral range	8 to 14 μm
Optical field/min. focus distance	33° x 25° / 0.4 m
Image size	640 x 480 pixels
Image display	3.5" LCD with 320 x 240 pixels
Display options	IR and digital image 881-1, 881-3
Video output	USB 2.0
Color palettes	9 options (ironbow, rainbow, cold/hot, blue/red, grayscale, inverted grey, sepia, testo, ironbow HT)
Temperature range	-4 to 232°F (-20 °C to +100 °C)
High temperature measurement (optional)	+662 °F to 1022 °F (881-3 only)
Accuracy	±2 °C, ±2 % of rdg, (-4 °F to +536 °F) ± 3% of reading (+662 °F to 1022 °F)
Minimum diameter measurement point	0.4" at 3 ft. (standard lens), 0.12" at 3 ft. (telephoto lens)
Setting emissivity	0.01 to 1
File format	.bmt; export options in .bmp, .jpg, .csv
Data storage device	2 GB SD card (approx. 1000 images)
Battery type	Fast-charging, Li-ion battery
Operating time	4 hours
Operating temperature range	5 °F to +104 °F
Storage temperature range	-22 °F to +140 °F
Protection class of housing	IP54
Weight	approx. 2 lbs
Dimensions (L x W x H)	6" x 4.2" x 10.3"
Tripod mounting	Yes
Housing	ABS
System requirements	Windows XP, Windows Vista, USB 2.0 interface, Windows 7, 32 Bit
Warranty	2 years

### Ordering Information

<b>Kit 881-1</b> - thermal imager kit with integrated digital camera	0563 0881 71
<b>Kit 881-3</b> - thermal imager kit with integrated digital camera and protective lens	0563 0881 73
<b>Kit 881-3 Deluxe</b> - thermal imager kit with integrated digital camera, telephoto lens protective lens, 2 bay battery charger, spare battery, and protective sunshield w/ shoulder strap	0563 0881 74

**Note:** all imager kits include hard shell case, SD-card, USB-cable, software, power supply and tripod mounting plate

### Accessories

Aluminum tripod	0554 8804
Protective lens	0554 8805
Additional battery	0554 8802
Two bay charger	0554 8801
Display Sun Shield	0554 8806
Emissivity adhesive tape Heatproof up to +572 °F	0554 0051
Soft-Case w/ shoulder strap	0554 8814

All imagers are delivered in a rugged case including professional software, SD card, USB cable, charger, Li-ion rechargeable battery and tripod adapter

Distributor:

See our testo 875 model at [ww.testo.com/thermal](http://ww.testo.com/thermal) - ideal for building performance applications.

testo, Inc. • 800-227-0729 • e-mail: [info@testo.com](mailto:info@testo.com) • [www.testo.com/thermal](http://www.testo.com/thermal)